



1 2 3 4

A

A

B

B

C

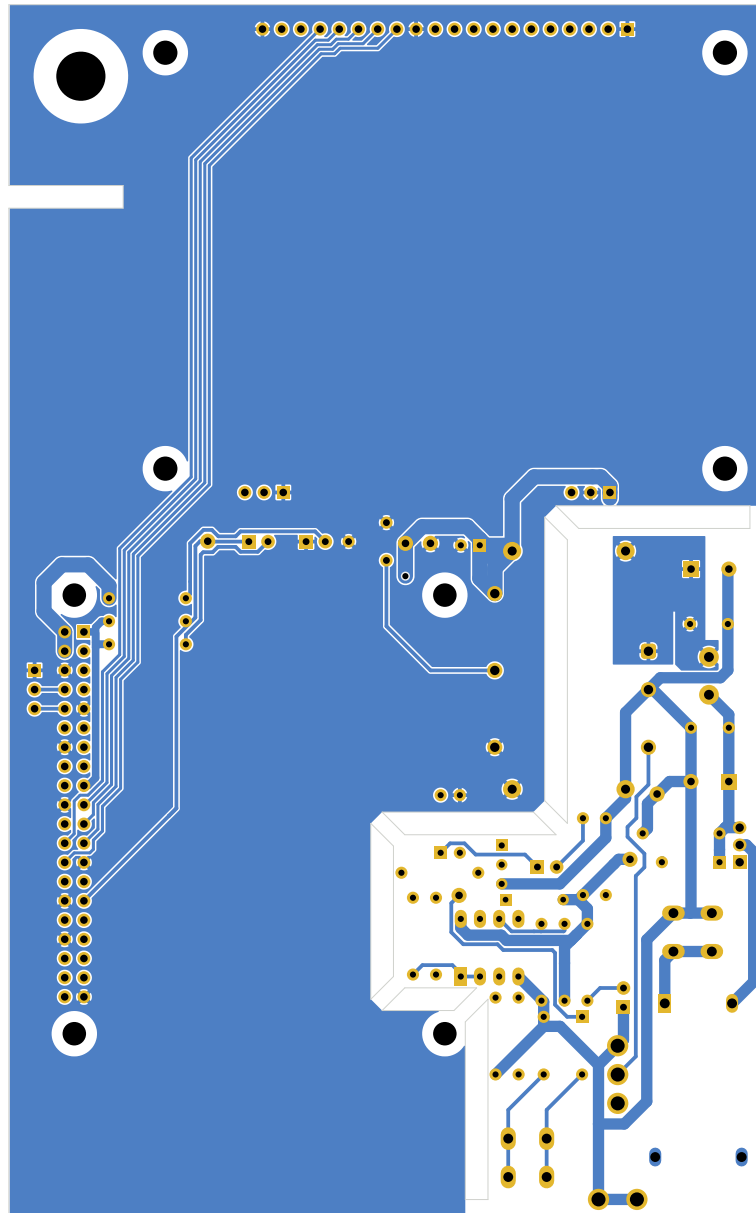
C


D

D

E

E



Responsible dept. EMW   ES-LAB	Technical reference DIN 40719-2, DIN EN 60664-1, DIN EN 61010-1	Created by Tobias Müller, M.Eng.	Approved by Tobias Müller, M.Eng.
 <p><b>HOCHSCHULE ANHALT</b> University of Applied Sciences</p>	Document type Schematic-Design	Document status work in progress	
	Title <b>LoRa-WAN Wind Power Control</b>	Supplementary title <i>Power &amp; Signal</i>	
		Rev. 1.0	Date of issue 2023-10-20

1 2 3 4

F

F

1 2 3 4

A

A

B

B

C

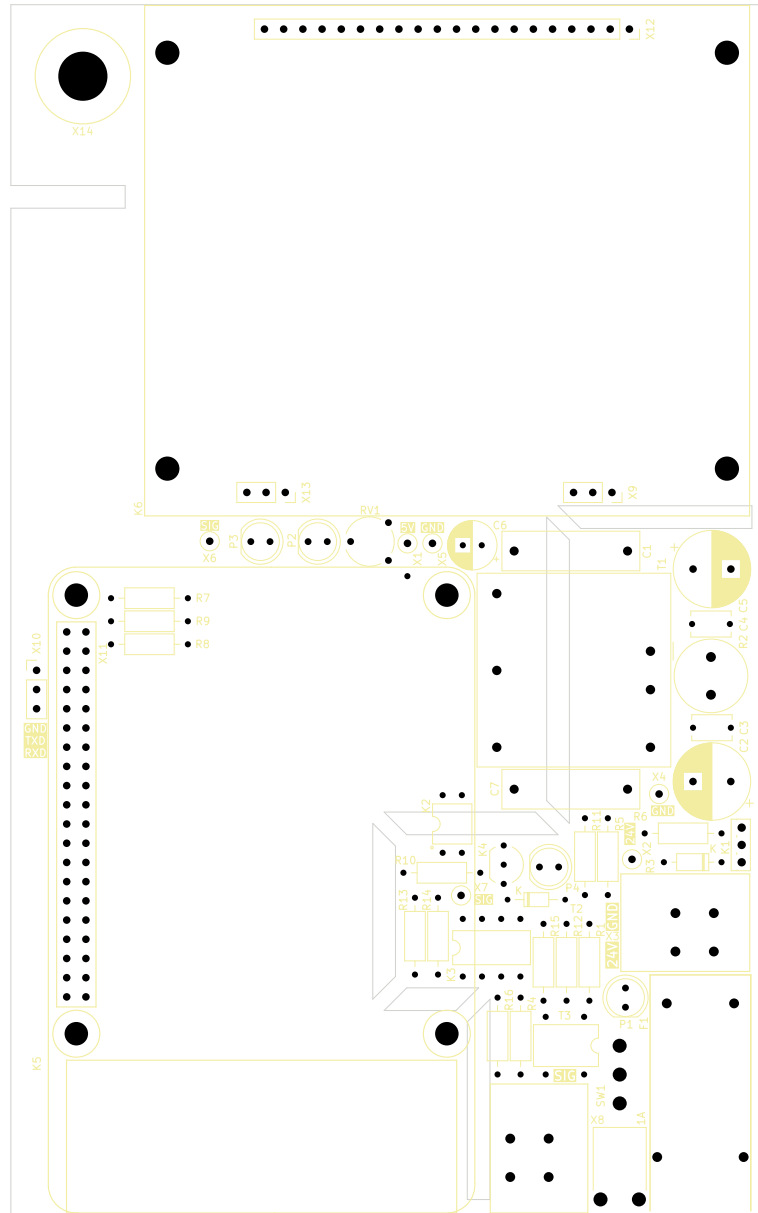
C

D

D

E

E



Responsible dept. EMW   ES-LAB	Technical reference DIN 40719-2, DIN EN 60664-1, DIN EN 61010-1	Created by Tobias Müller, M.Eng.	Approved by Tobias Müller, M.Eng.
-----------------------------------	---	-------------------------------------	--------------------------------------

 <b>HOCHSCHULE ANHALT</b> University of Applied Sciences	Document type Schematic-Design	Document status work in progress
---	-----------------------------------	-------------------------------------

	Title <b>LoRa-WAN Wind Power Control</b>	Supplementary title <b>Power &amp; Signal</b>
--	---	--

		Rev. 1.0	Date of issue 2023-10-20	Lang. EN	Sheet 1/1
--	--	----------	--------------------------	----------	-----------

1 2 3 4

F

F

1 2 3 4

A

A

B

B

C

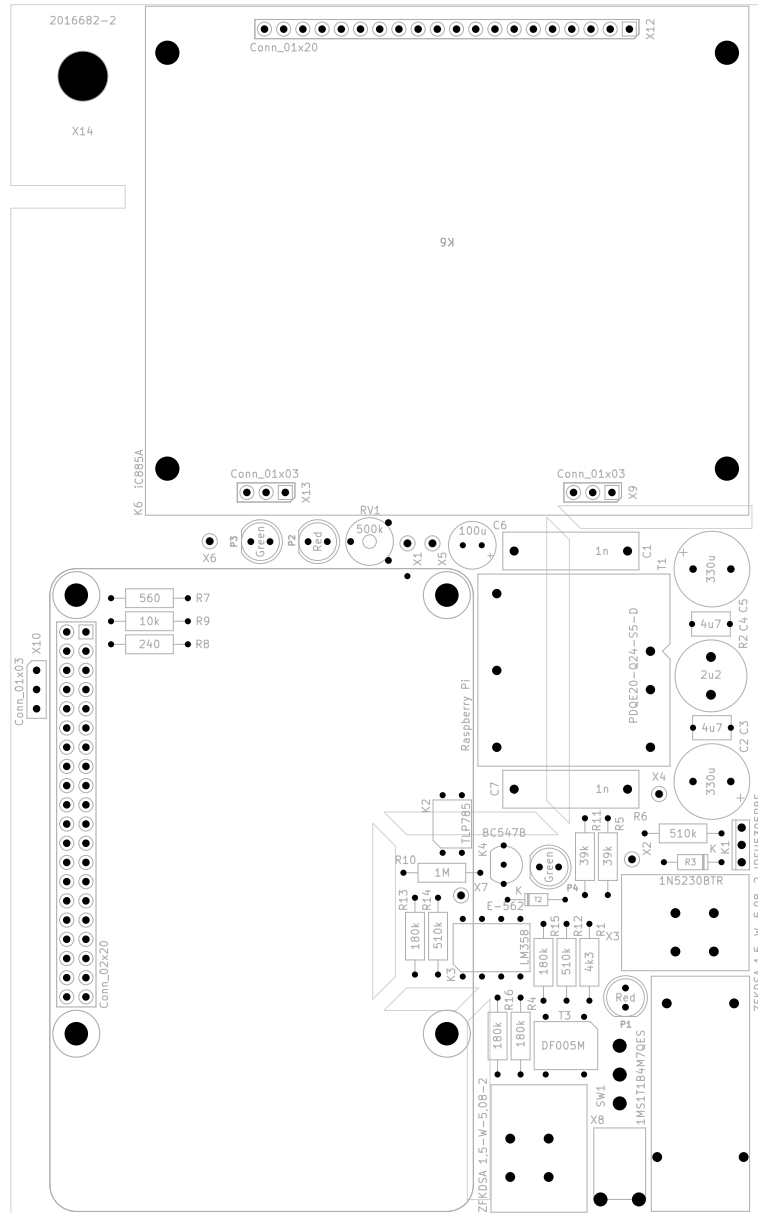
C


D

D

E

E



Responsible dept. EMW   ES-LAB	Technical reference DIN 40719-2, DIN EN 60664-1, DIN EN 61010-1	Created by Tobias Müller, M.Eng.	Approved by Tobias Müller, M.Eng.	
 <b>HOCHSCHULE ANHALT</b> University of Applied Sciences		Document type Schematic-Design	Document status work in progress	
		Title <b>LoRa-WAN Wind Power Control</b>		Supplementary title <b>Power &amp; Signal</b>
		Rev. 1.0	Date of issue 2023-10-20	Lang. EN

1 2 3 4

F

F